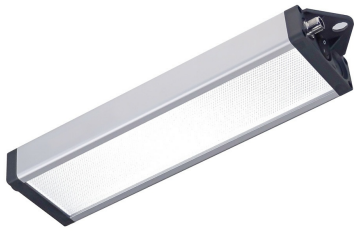


110914-23

## UNILED SL DC | 1045mm | White 5000K

EAN: 4260556623405



### Specifications

Beam angle	100°	Length	1045mm
Brand	LED2WORK	Light efficiency	155lm/W
Certificates, quality marks, markings	CE, UKCA, ETL Listed	Light source	LED
Colour	White (daylight)	Luminous flux	7596lm
Colour rendering	>85	Made in	Germany
Colour temperature range	5200K - 5700K	Material	Housing: aluminium   cover: microprism
Connection	M12 (A-code), 5-pin	Operating temperature	-10°C to +60°C
Design	UNILED SL DC	Power (max.)	48W
Dimensions	1045mm x 35mm x 85mm	Rated voltage	24V DC
Dimmable	Yes, with optional accessory	Weight	1850g
Ingress protection	IP50	Window type	Microprismatic plastic
LED life	60 000h		

